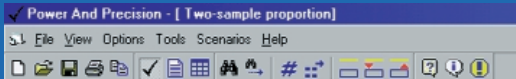


"Your software is superb!"

— Dr. David Noble, University of Aberdeen

A computer program for statistical power analysis and confidence intervals

POWER AND PRECISION



Find the sample size you need. **FAST**

WORK

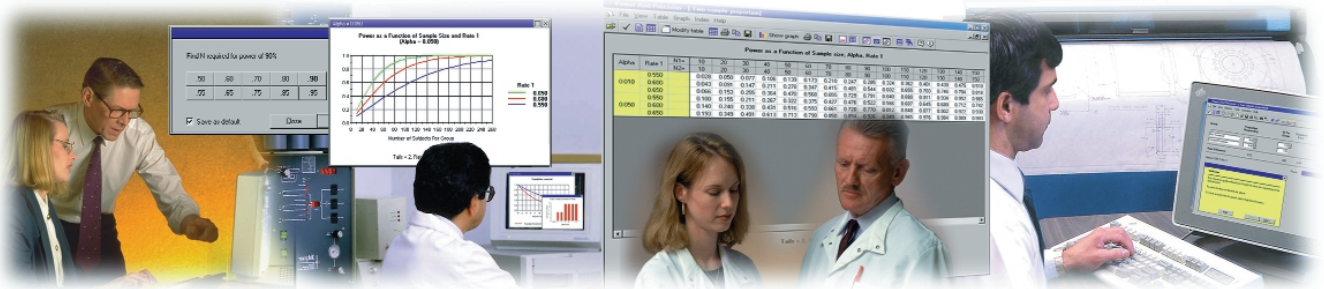
with confidence

GET

the big picture in seconds

PRESENT

results professionally



"I'm using another program. Why should I switch?"

Because with this program

- The interface is a pleasure
- The report is both detailed and clear
- The table and graphs are created effortlessly, and they get it exactly right.

An indispensable resource for grant applications.

EMPOWER YOURSELF



FOR THE

RESEARCHER

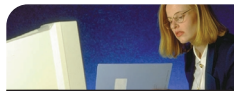
This program is incredibly easy to learn and use. The interface is clear and intuitive. The interactive guide will walk you through all steps in the power analysis. The clear instructions ensure that power is computed correctly and the detailed report ensures that it is communicated properly.



FOR THE

ACADEMIC INSTRUCTOR

When students manipulate power interactively the concepts come alive and they "get it". The detailed report serves as an example of how a power analysis should be communicated. The interactive guides, extensive Help system, and worked examples are invaluable resources.



FOR THE

STATISTICIAN

Spend your time productively and present your results professionally. Create tables and graphs in a matter of seconds rather than hours and incorporate these in study plans for added emphasis and clarity.

"I've been in love with the earlier version of your program for years, but this one is really amazing."

— Brenda J. Shields, Columbus, OH

This program is universally acclaimed for its clear interface, ease of use and computational accuracy.

The program is currently in use at more than 8,000 institutions including the FDA, CDC, World Health Organization, major universities, pharmaceutical companies, businesses, consulting firms, and medical centers.

FIND

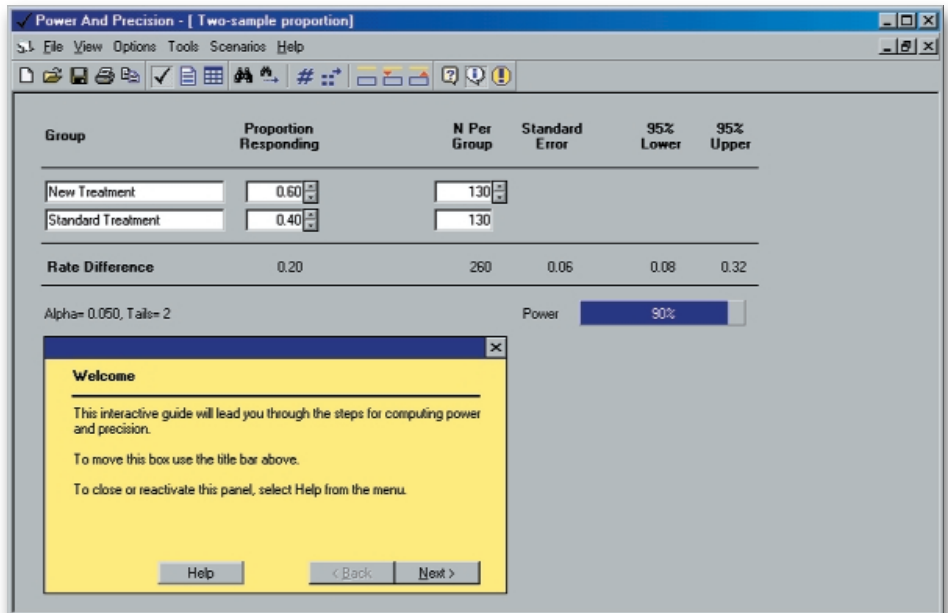
OUT

WHY



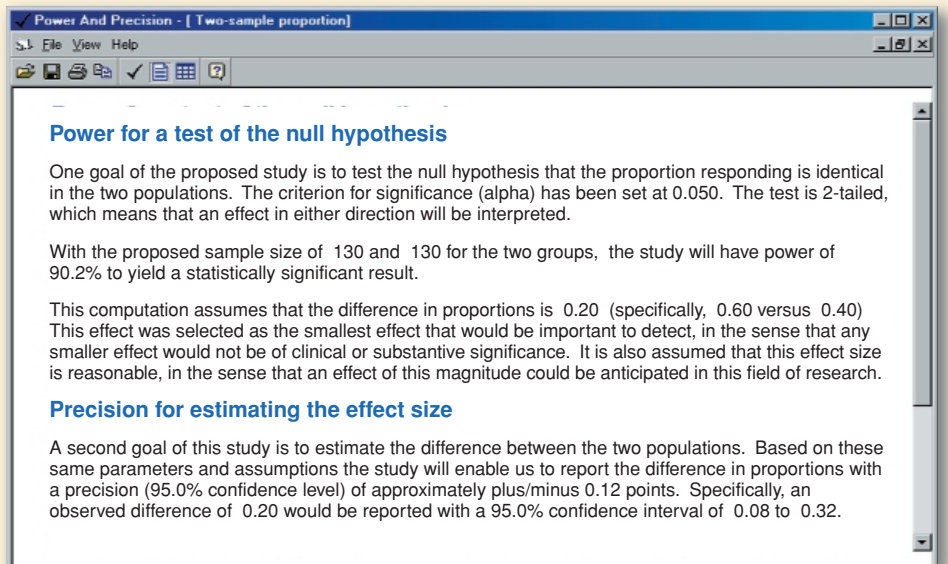
Work interactively!

- Interactive guide walks you through all the steps in the power analysis
- Modify any element in the study and immediately see the impact on power
- Use a wide array of tools to visualize the effect size and to understand the impact of alpha, effect size, and sample size



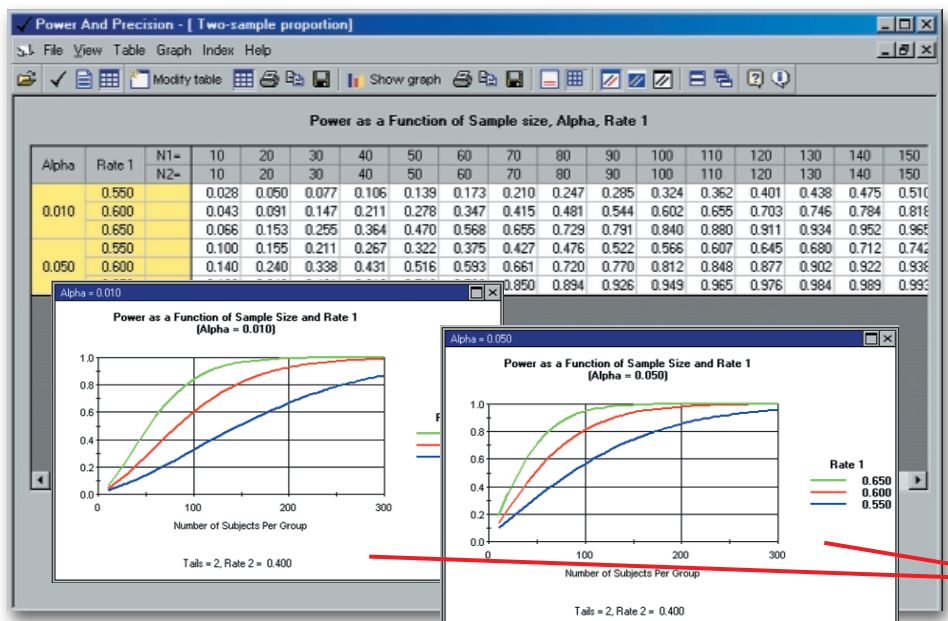
Create a report with a single click!

- The program generates a lucid, comprehensive report that explains the study design, assumptions, and power.
- The report serves as a teaching tool and may also be used in the statistics section of a study proposal or grant application
- Export to Word™ or other word processing program.



Create tables and graphs with a single click!

- Get the big picture in just seconds! Use graphs to quickly evaluate any number of options for study design.
- Export to Word™, Excel™, PowerPoint™ and other programs.
- Include the graphs in your presentation or grant application to justify your selection of a sample size.



An Illustrative Example

Tools and Features

Assume that you are planning a study to compare the proportion of patients responding to two treatments. Patients will be randomly assigned to either the standard treatment or a new treatment.

The standard treatment has a response rate on the order of 40% and the new treatment would be considered useful if it increased the response rate to 60%. What sample size is required to yield power of 90%?

The following steps, which correspond to panels at left, show how you would use the program to quickly compute power and prepare a report and graphs.

- 1 Select the module for two independent proportions
 - Enter names for the two groups.
 - Enter the response rate for each group (60%, 40%)
 - Click on Alpha and select a value (.05)
 - Click “Find N” for power of 90%
 - The program shows that 130 subjects per group will yield power of 90%

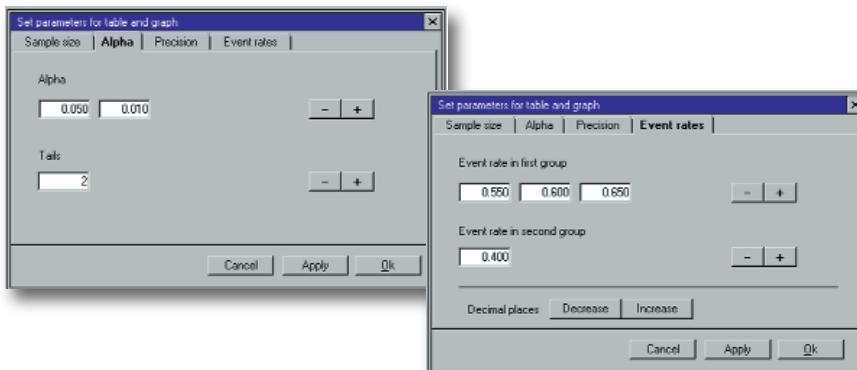


- 2 Click “Make Report” to create the report shown at left. Copy to clipboard and export to Word @ or other word processing program.



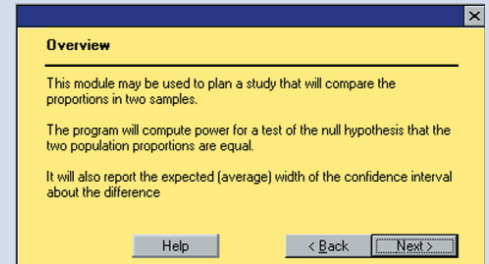
- 3 Click “Make Table” to create the table and graphs. The program picks up the effect size and alpha from the main screen and uses these to automatically select a range of plausible values for sample size. The initial table and graph are created immediately.

- 4 Add factors to the table and graphs in seconds! Open the wizard (below), add one or more factors, and click OK. The program automatically nests the factors, adds titles to the tables and graphs, creates legends, sets a new range for the sample size—in an instant.

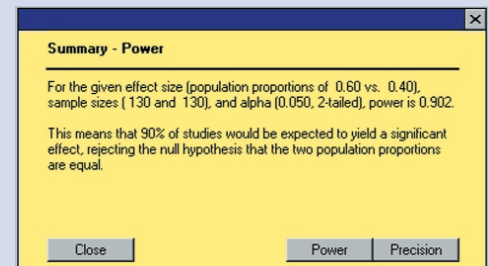


- 5 Pivot the tables and graphs! To modify tables simply drag and drop the columns. All elements of the graphs, including titles and legends, are modified automatically as well.
- 6 Export the report, table and graphs to your word processing program and include them in your study plan or grant application.

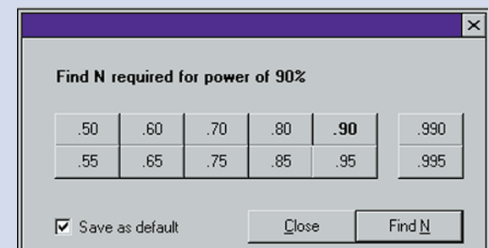
How much more impressive would your proposal be with the inclusion of these graphs? Define, create, and export the graphs in less than a minute!



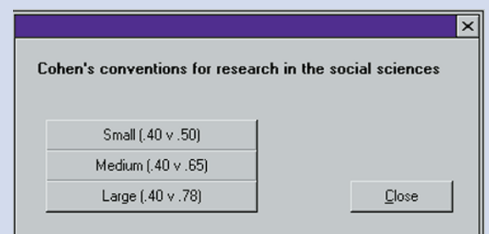
INTERACTIVE GUIDE. This guide alerts you to the program's features and offers suggestions for increasing power.



CONTINUOUS SUMMARY. This panel provides a running commentary on the current state of the analysis.



FIND THE SAMPLE SIZE AUTOMATICALLY. Click “Find N” and the program displays the sample size required for any level of power. You may specify an allocation ratio (e.g., 2:1) which will be honored in all computations.



CONVENTIONS FOR EFFECT SIZE. If you cannot estimate an effect size, use Cohen's conventions for small, medium, and large effects. Even when you can estimate an effect size, compare it with these values to ensure that your values are realistic.

SPECIFICATIONS

POWER AND PRECISION

WORKING WITH RESULTS

Tables

- Print directly
- Copy to clipboard as data and insert into Microsoft Excel® or other spreadsheet **NEW!**
- Copy to clipboard as a bitmap and insert into Microsoft Word® or other word processing program

Graphs

- Print directly
- Copy to clipboard as data and insert into Microsoft Word® or other word processing program
- Export as bitmap (BMP), Windows Metafile (WMF) or Windows enhanced Metafile (EMF) and insert into Microsoft Word®, PowerPoint® or other programs **NEW!**

Reports

- Save as RTF file or copy to clipboard and insert into Word® or other word processing programs.

Stored Scenarios (Sensitivity analysis)

- Print directly
- Copy to clipboard as data and insert into Microsoft Excel® or other spreadsheet **NEW!**
- Copy to clipboard as a bitmap and insert into Microsoft Word® or other word processing program

Tables and graphs

- Pivot the tables interactively **NEW!**
- Display several graphs at once to assess the impact of factors in isolation or in combination with each other. **NEW!**
- Graphs are linked to the tables — Drag and drop columns in table, and the graphs are updated as well. **NEW!**
- Graphs can be saved as BMP, WMF, EMF files and easily exported to Word, PowerPoint, and other programs. **NEW!**
- Tabulate and graph precision (confidence interval) and standard error as well as power for proportions and means.

TOOLS AND FEATURES

- Find the sample size for a given level of power
- Assign subjects to groups using allocation ratio
- Store and restore any set of parameters
- Apply Cohen's effect size conventions
- Store scenarios to list (sensitivity analysis)
- Customize the spin control for sample size
- Customize data entry

- Set alpha and tails, link to confidence interval
- Customize the number of decimals displayed
- Display power using digits or bar graph

STATISTICAL PROCEDURES

t-tests and z-tests

- One group against a null of zero
- One group against a user-specified null
- Paired/change against a null of zero
- Paired/change against a user-specified null
- Two independent groups, enter difference score
- Two independent groups, enter mean for each group

Proportions

- One group against a null of 50%
- One group against a user-specified null
- Two independent groups (Eight computational options for power including Fisher exact test. Indices include risk difference, relative risk, and odds ratio).
- McNemar test of paired proportions
- KxC test of independent proportions*
- Sign tests

Correlations

- One group against a null of zero
- One group against a user-specified null*
- Two groups*

Analysis of variance/covariance

- One way analysis of variance/covariance
- Two way fixed effects factorial anova/ancova
- Three way fixed effects anova/ancova

Multiple hierarchical linear regression

- Templates for common designs including covariates followed by main effects; main effects followed by interactions; dummy-coded variables; and polynomial regression
- Customize the design with up to 10 sets of variables and up to 99 variables per set
- Computes power for the increment to R-squared at each step and also for the cumulative R-squared at each step
- Compute power for sequential sets combined

Logistic regression* **NEW!**

- One continuous covariate
- Two continuous covariates, one partialled
- Two continuous covariates combined
- One categorical covariate up to 5 levels

Survival analysis* **NEW!**

- Accrual options — Prior to study, constant rate, or varies
- Hazard — Constant rate or varies
- Attrition (Drop-outs) — None, constant rate, or varies

Equivalence tests **NEW!**

- Proportions*
- Means

General Case

- Compute power using the non-central t distribution, non-central F, or non-central chi-square distributions

Power, confidence intervals, tolerance intervals

- Compute power for all procedures
- Compute precision (expected width of confidence intervals) for t-tests, z-tests, one sample proportions, two independent sample proportions, and one sample correlation
- Compute tolerance intervals for t-tests

Computational Algorithms

Includes exact algorithms for all procedures except where noted by (*).

Help and Technical Support

- Interactive guide
- Continuous summary
- Tip of the day
- Windows Help System including Table of Contents, Index, Step-by-Step Help
- Technical support by e-mail or phone

Printed manual

The printed manual explains the logic and proper application of power analysis. It also includes worked examples for each statistical procedure, and details for all algorithms. An extensive Help system provides step-by-step instructions for each procedure.

DEVELOPED BY A TEAM OF EXPERTS

Michael Borenstein, Jacob Cohen, Hannah Rothstein, David Schoenfeld, Jesse Berlin, Ed Lakatos

Biostat™

14 North Dean Street, Englewood, NJ 07631 • USA
Tel: 201-541-5688 • TOLL-FREE: 1-877-BIOSTAT
Fax: 201-541-5526 • Info@PowerAnalysis.com

Program developed with funding from the National Institutes of Health (NIMH/SBIR)
Grants #MH43083, MH52969, MH558483, MH60033.

©1997-2001 Biostat, Inc. All rights reserved. Unauthorized use is a violation of applicable laws. Made in USA.
Requires Windows® 95/98/Me/2000 or NT 4.0 and SVGA (800x600) screen.
*Windows, Word, PowerPoint and Excel are trademarks of Microsoft Corporation.

www.PowerAnalysis.com